

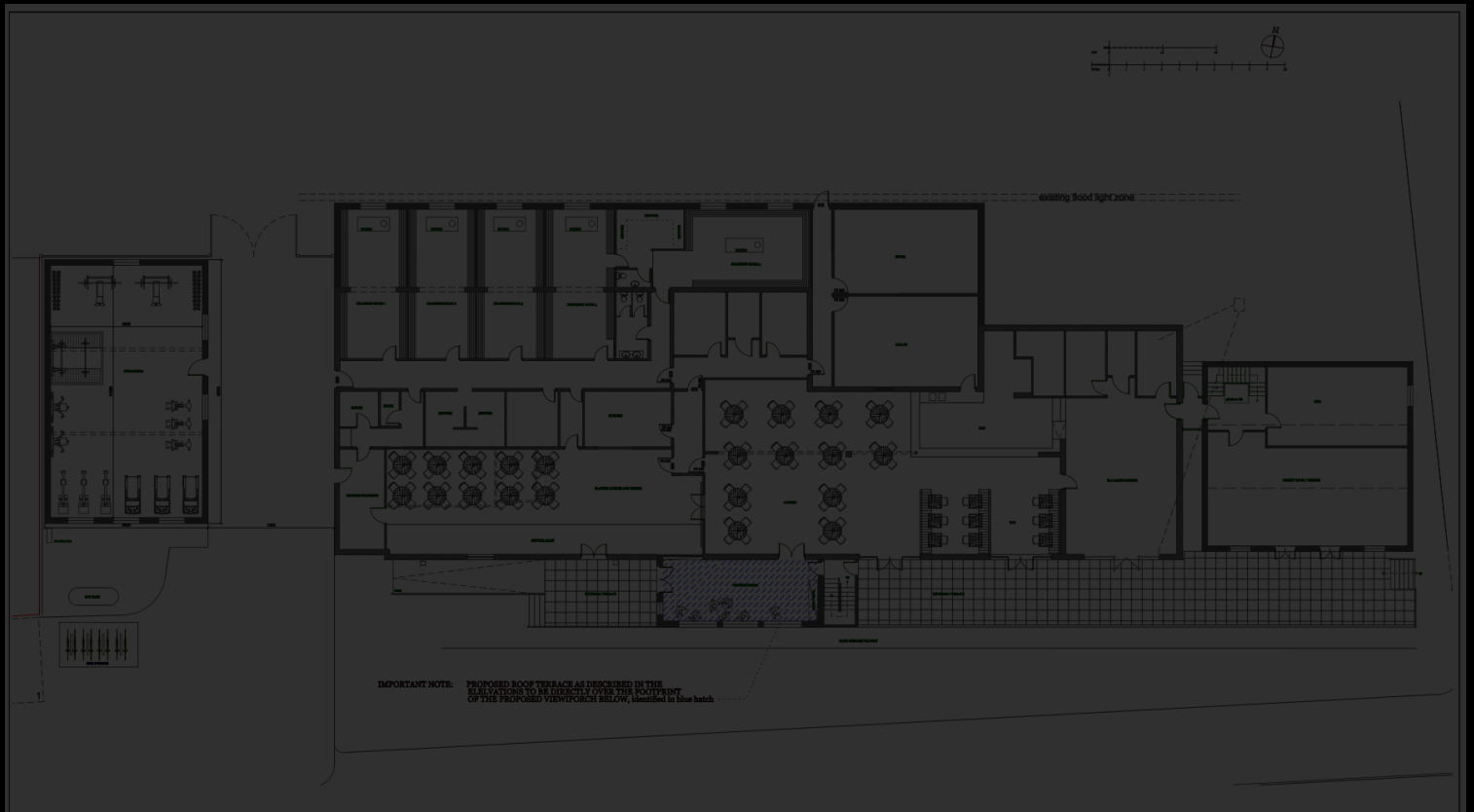


Supporting Evidence for Funding Submission

Barry RFC Clubhouse Redevelopment

GAP Analysis & Community Need Report

April 2026





Executive Summary

Barry RFC is located within a community facing significant social and economic challenges, including an area ranked among the 10% most deprived in Wales. This places the project as a targeted investment in a high-need community where improved facilities can deliver meaningful social impact.

Community consultation demonstrates overwhelming support for improved facilities at Barry RFC and strong evidence of likely regular use. Existing provision in Barry is limited, fragmented and unable to fully meet current and future need across youth provision, wellbeing activity, inclusive community use and safe social space.

The proposed clubhouse redevelopment will respond directly to these identified gaps by creating a stronger community hub that supports health and wellbeing, reduces isolation, creates more opportunities for young people and strengthens community cohesion.

This project is not about sport for its own sake — it is about creating accessible space that supports wellbeing, inclusion and community connection.

Key Community Need & Evidence

192

Community responses

98%

Support the project overall

78%

Say improved facilities are very important

69%

Would use the facilities weekly or more

84%

Say Barry would benefit from a community hub at Barry RFC

Top 10%

Most deprived areas of Wales



Community Need and Local Context

Area Context

Barry RFC is situated in a part of Barry that falls within one of the 10% most deprived areas in Wales. This is important context for the project, as communities facing higher deprivation often experience reduced access to quality facilities, greater health inequalities, fewer safe and affordable places to meet, and fewer opportunities for structured youth and community activity.

The proposed redevelopment is therefore not simply a facilities improvement project. It is a targeted intervention in a community where better access to wellbeing activity, community space and inclusive local provision can deliver wider social value.

Existing Provision

Current provision in Barry is limited in terms of modern, flexible and accessible community space. Existing venues do not fully meet the need for a stronger multi-use local hub that can support youth provision, wellbeing activity, community groups and wider social use in one place.

There is also clear evidence of pressure on local facilities, with limited availability of accessible, high-quality, all-weather space for community use. Existing provision is frequently fully booked, restricting opportunities for wider participation, community programming and inclusive activity.

Why this matters

Without improved facilities, local people face fewer opportunities to participate and connect.

This limits access to safe social space and inclusive community activity close to home.



Community Consultation Findings

Strong community support for improved local facilities and clear evidence of regular future use.

98%

support improved facilities to create a stronger local hub

96%

rated the importance of improving facilities as 4 or 5 out of 5

92%

would be likely or very likely to use improved facilities

69%

would use improved facilities at least weekly

The data demonstrates both strong demand and likely sustained use. This is important because it shows that improved facilities would not only be welcomed in principle, but would also be actively used by the local community on a regular basis.

Who responded

Responses were received from a broad mix of local residents, parents and guardians, players, coaches, volunteers, Barry RFC members and community organisations. The vast majority of respondents were based in Barry, confirming strong local relevance and engagement.



Identified Gaps & Proposed Response

Gaps Identified Through Consultation

- Lack of inclusive and accessible facilities
- Limited youth provision
- Lack of safe social space
- Insufficient health and wellbeing activity space
- Limited fitness and gym facilities
- Need for better indoor community space
- Demand for facilities that better support women, girls and mixed use
- Need for improved basic amenities including toilets

These findings were clearly reflected in the consultation responses, where inclusive facilities, youth provision, safe social space, wellbeing activities and fitness facilities were among the most commonly identified missing elements in Barry.

How the Project Will Respond

- Creates a more inclusive and accessible community hub
- Provides better space for youth activity and positive engagement
- Increases opportunities for health, wellbeing and inclusive activity
- Supports wider community and group use
- Improves indoor community space and flexibility of use
- Strengthens provision for women, girls and mixed community activity
- Improves the overall quality, safety and usability of facilities

Taken together, these improvements would enable Barry RFC to play a stronger role as a community anchor institution, supporting a broader range of local needs and partnerships.



Organisational Support & Wider Community Impact

In addition to individual responses, the consultation received engagement from local groups, charities and community organisations. These organisations represent a significantly wider cross-section of the community, extending the reach and impact of the proposed development beyond individual respondents.

Their interest demonstrates strong potential for partnership delivery, regular usage and broader social impact.

These organisations collectively extend the project's relevance far beyond individual respondents.

Examples of Organisational Interest

About Turn Wales

Mental health and wellbeing support organisation.

Vale 50+

Strategy Forum

Represents older residents and promotes inclusion, wellbeing and community engagement.

Tenovus Choir

Supports people affected by cancer through group activity, social connection and wellbeing.

Other local community groups

Including social, activity and support groups interested in wider community use.

77%

of responding organisations said they would be interested in using improved facilities

This demonstrates strong potential for partnership-based delivery.

Potential Uses Identified

- Community meetings and events
- Choir rehearsals and social groups
- Youth activity and engagement
- Health and wellbeing sessions
- Awareness and outreach activity
- Activity sessions and structured group use

This project is not only supported by individuals, but by organisations delivering real impact across the community.



Community Voice and Conclusion

What the community said

“

“More facilities to improve health and wellbeing of local residents and youth.”

”

“

“Reduced isolation.”

”

“

“Reintroduce a youth club and provide opportunities and life skills.”

”

“

“Safer facilities for all age groups.”

”

Conclusion

The evidence demonstrates a clear gap between existing provision in Barry and the needs of the local community. Consultation responses show overwhelming support, likely regular usage and demand extending into youth provision, wellbeing, inclusion and safer community space.

The proposed clubhouse redevelopment represents a practical, place-based and high-impact response to those needs. It will strengthen Barry RFC's ability to serve as a stronger and more inclusive community hub and create long-term benefits for local people in an area where improved facilities are genuinely needed.

A stronger club. A stronger community.